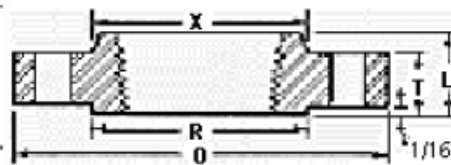
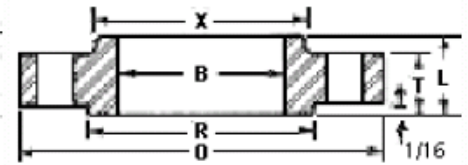


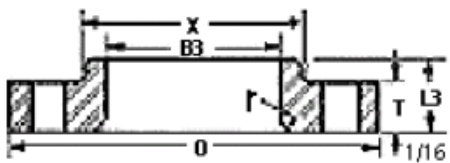
Weld Neck



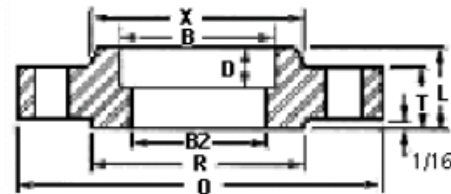
Threaded



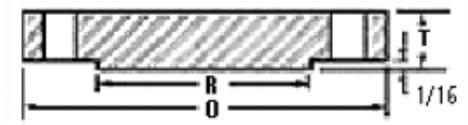
Slip-On



Lap Joint



Socket Weld



Blind

Nom. Pipe Size	O	T <sub>1</sub>	R	X	No. of Holes / Dia.	Bolt Circle Dia.	L <sub>2</sub>	H	B <sub>2</sub>	L	B	r	L <sub>3</sub>	B <sub>3</sub>	D
½	3.5	.44	1.38	1.19	4-0.62	2.38	1.88	.84	.62	.62	.88	.12	.62	.9	.38
¾	3.88	.5	1.69	1.5	4-0.62	2.75	2.06	1.05	.82	.62	1.09	.12	.62	1.11	.44
1	4.25	.56	2	1.94	4-0.62	3.12	2.19	1.32	1.05	.69	1.36	.12	.69	1.38	.5
1¼	4.62	.62	2.5	2.31	4-0.62	3.5	2.25	1.66	1.38	.81	1.70	.19	.81	1.72	.56
1½	5	.68	2.88	2.56	4-0.62	3.88	2.44	1.9	1.61	.88	1.95	.25	.88	1.97	.62
2	6	.75	3.62	3.06	4-0.75	4.75	2.5	2.38	2.07	1	2.44	.31	1	2.46	.69
2½	7	.88	4.12	3.56	4-0.75	5.5	2.75	2.88	2.47	1.12	2.94	.31	1.12	2.97	.75
3	7.5	.94	5	4.25	4-0.75	6	2.75	3.5	3.07	1.19	3.57	.38	1.19	3.6	.81
3½	8.5	.94	5.5	4.81	8-0.75	7	2.81	4	3.55	1.25	4.07	.38	1.25	4.1	.88
4	9	.94	6.19	5.31	8-0.75	7.5	3	4.5	4.03	1.31	4.57	.44	1.31	4.6	.94
5	10	.94	7.31	6.44	8-0.88	8.5	3.5	5.56	5.05	1.44	5.66	.44	1.44	5.69	.94
6	11	1	8.5	7.56	8-0.88	9.5	3.5	6.63	6.07	1.56	6.72	.5	1.56	6.75	1.06
8	13.5	1.12	10.62	9.69	8-0.88	11.75	4	8.63	7.98	1.75	8.72	.5	1.75	8.75	1.25
10	16	1.19	12.75	12	12-1.00	14.25	4	10.75	10.02	1.94	10.88	.5	1.94	10.92	1.31
12	19	1.25	15	14.38	12-1.00	17	4.5	12.75	12	2.19	12.88	.5	2.19	12.92	1.56
14	21	1.38	16.25	15.75	12-1.12	18.75	5	14	13.25	2.25	14.14	.5	3.12	14.18	1.63
16	23.5	1.44	18.5	18	16-1.12	21.25	5	16	15.25	2.5	16.16	.5	3.44	16.19	1.75
18	25	1.56	21	19.88	16-1.25	22.75	5.5	18	17.25	2.69	18.18	.5	3.81	18.20	1.94
20	27.5	1.69	23	22	20-1.25	25	5.69	20	19.25	2.88	20.2	.5	4.06	20.25	2.13
22	29.5	1.81	25.25	24.25	20-1.38	27.25	5.88	22	21.25	3.13	22.22	.5	4.25	22.25	2.38
24	32	1.88	27.25	26.12	20-1.38	29.5	6	24	23.25	3.25	24.25	.5	4.38	24.25	2.50

Dimensions in inches.